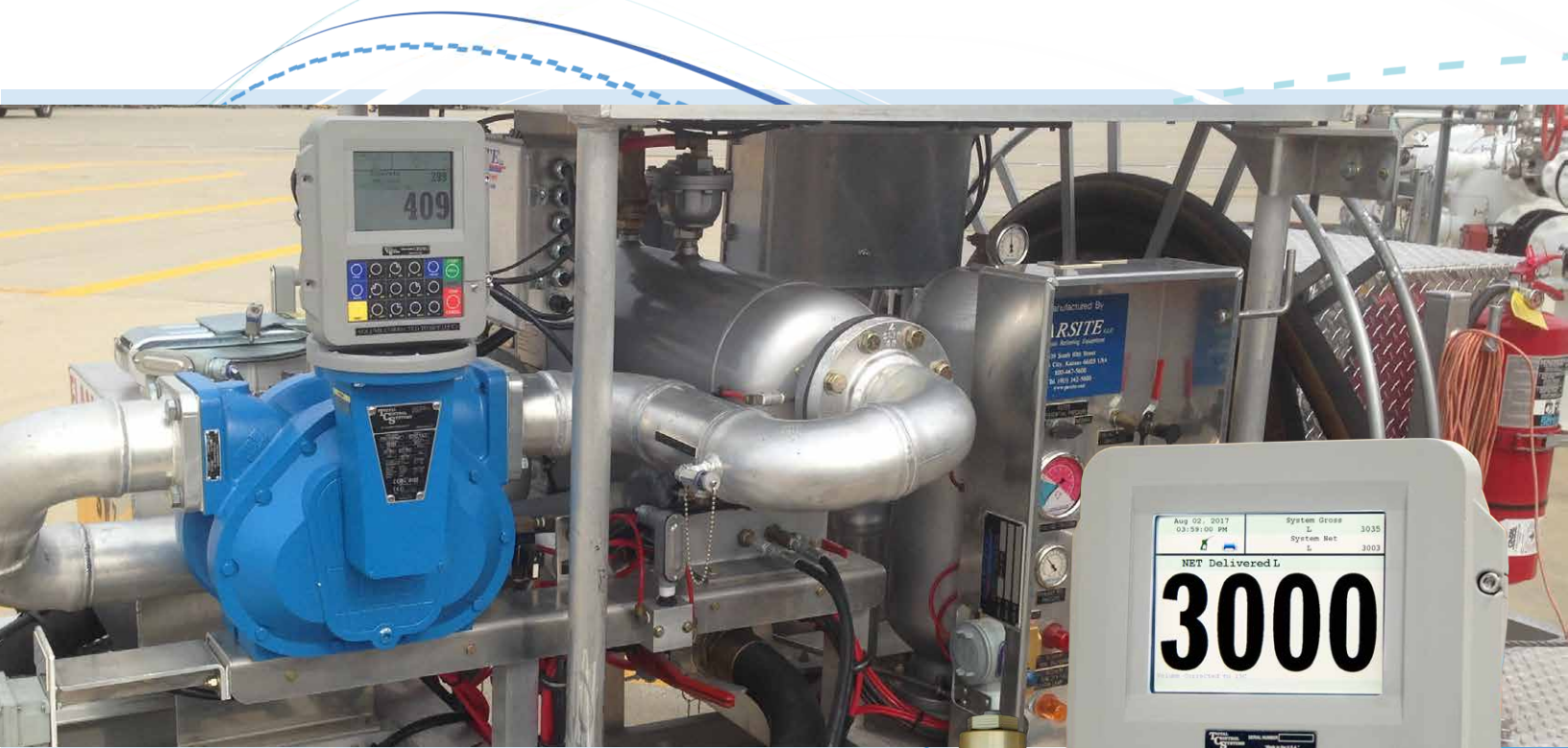


TCS 3000 INTEGRATION: DIFFERENTIAL PRESSURE



Ensure safe aircraft fueling with filter differential pressure monitoring and limit shutdown.

AUTOMATIC DIFFERENTIAL PRESSURE MONITORING SYSTEM

- » Monitor Pressure Before & After Filtration
- » Correct Filter ΔP Based on Maximum Achievable Flow Rate
- » Automatic Shutdown if ΔP Exceeds Limits

SENSOR INTEGRATION

- » GTP 7534 Digital Gammon Gauge
- » Analog Differential Pressure Sensors
- » See c ΔP Trending & Analytics Online via TCS HUB Host Manager to Closely Monitor Filter Changes Over Time



TECHNOLOGY

- » Voltage or 4-20 mA Current Input
- » Pressure Range (Scalable)
- » Limit Shutdown Setting (Scalable)
- » Maximum Achievable Flow Rate Setting (Scalable)
- » Limit Shutdown Password Lockout

The TCS 3000 Electronic Register automatically monitors corrected differential pressure and prevents deliveries when ΔP exceeds scalable limits.

Jan 31, 2018 04:28:41 PM	System Gross GAL 145926.03
	System Net GAL 141620.04

SAFETY INTERLOCK!
MAXIMUM CORRECTED DIFFERENTIAL PRESSURE EXCEEDED!
CORRECTED DIFFERENTIAL PRESSURE IS ABOVE SET VALUE, DELIVERY ABORTED!
PRESS ANY KEY TO CONTINUE

Feb 01, 2018 11:55:12 AM	System Gross GAL 147319.4
	System Net GAL 143032.3
NET GAL 352.2	
JET W/	Gross
347.5	
Volume Corrected to 60 deg F	

→ CORR.DP PSI	8.4	H2O ppm	7.9
→ PEAK.CDP PSI	11.9	MAX.H2O ppm	19.8
→ PK. FLOW GAL/min	179.8	AVG.H2O ppm	11.8
Density lbs/GAL	6.8	Mass lbs	2395.0



“The TCS 3000 register’s ability to read and correct differential pressure allows us to stay on top of our filter maintenance while comfortably monitoring our equipment from the TCS HUB website.”

>>> Ron Pattie, SkyFuel Aviation Services



Made in U.S.A.



The Standard of Measurement

©2018 Total Control Systems
TCS 900042.001